

© 2016 RPS Group
 Notes
 1. This drawing has been prepared in accordance with the scope of RPS's appointment with its client and is subject to the terms and conditions of that appointment. RPS accepts no liability for any use of this document other than by its client and only for the purposes for which it was prepared and provided.
 2. If received electronically it is the recipients responsibility to print to correct scale. Only written dimensions should be used.

Legend

- Site Boundary
- 2km Site Buffer

LANDMAP Geological Landscape Aspect Level 3

- Engineered features and reclaimed / infilled land
- Lowland escarpment
- Lowland plateau
- Lowland till plain / field
- Undulating lowland hill terrain

Rev	Description	Date	Initial	Checked
A	Revised Red Line Boundary	08/08/17	GG	CF

RPS

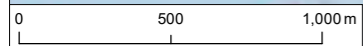
Park House, Greyfriars Road, Cardiff, CF10 3AQ
 T: +44(0)2920 668 662 E: rpsca@rpsgroup.com F: +44(0)2920 668 622

Client **BARRATT HOMES SOUTH WALES**
 Project **FORMER ST. CYRES SCHOOL**
 Title **LANDMAP: GEOLOGICAL LANDSCAPE ASPECT AREA CLASSIFICATION - LEVEL 3**

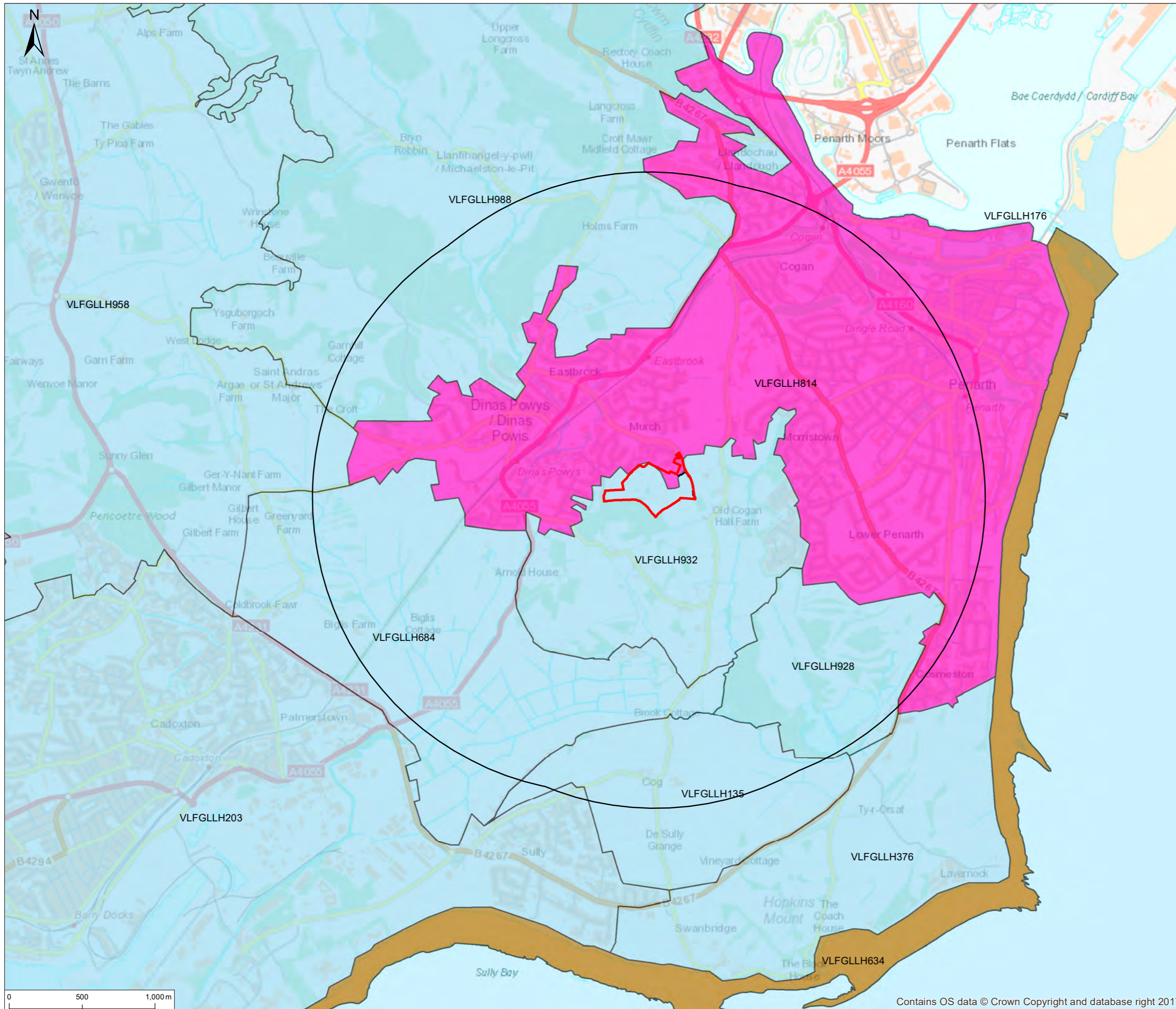
Status PLANNING	Drawn By GG	PM/Checked By MG
Job Ref JPW0642	Scale @ A3 1:25,000	Date Created AUG 17
Drawing Number JPW0642-012		Rev A

FIGURE 6a

rpsgroup.com/uk



Contains OS data © Crown Copyright and database right 2017



© 2016 RPS Group
 Notes
 1. This drawing has been prepared in accordance with the scope of RPS's appointment with its client and is subject to the terms and conditions of that appointment. RPS accepts no liability for any use of this document other than by its client and only for the purposes for which it was prepared and provided.
 2. If received electronically it is the recipients responsibility to print to correct scale. Only written dimensions should be used.


Legend

- Site Boundary
- 2km Site Buffer

LANDMAP Landscape Habitats Aspect Area Classification Level 3

- Intertidal, Including Muds/Sands, Saltmarsh, Shingle(Trimmed)
- Mosaic
- Residential/Green Space

Rev	Description	Date	Initial	Checked
A	Revised Red Line Boundary	08/08/17	GG	CF



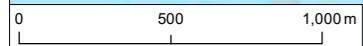
Park House, Greyfriars Road, Cardiff, CF10 3AQ
 T: +44(0)2920 668 662 E: rpsca@rpsgroup.com F: +44(0)2920 668 622

Client **BARRATT HOMES SOUTH WALES**
 Project **FORMER ST. CYRES SCHOOL**
 Title **LANDMAP: LANDSCAPE HABITATS ASPECT AREA CLASSIFICATION - LEVEL 3**

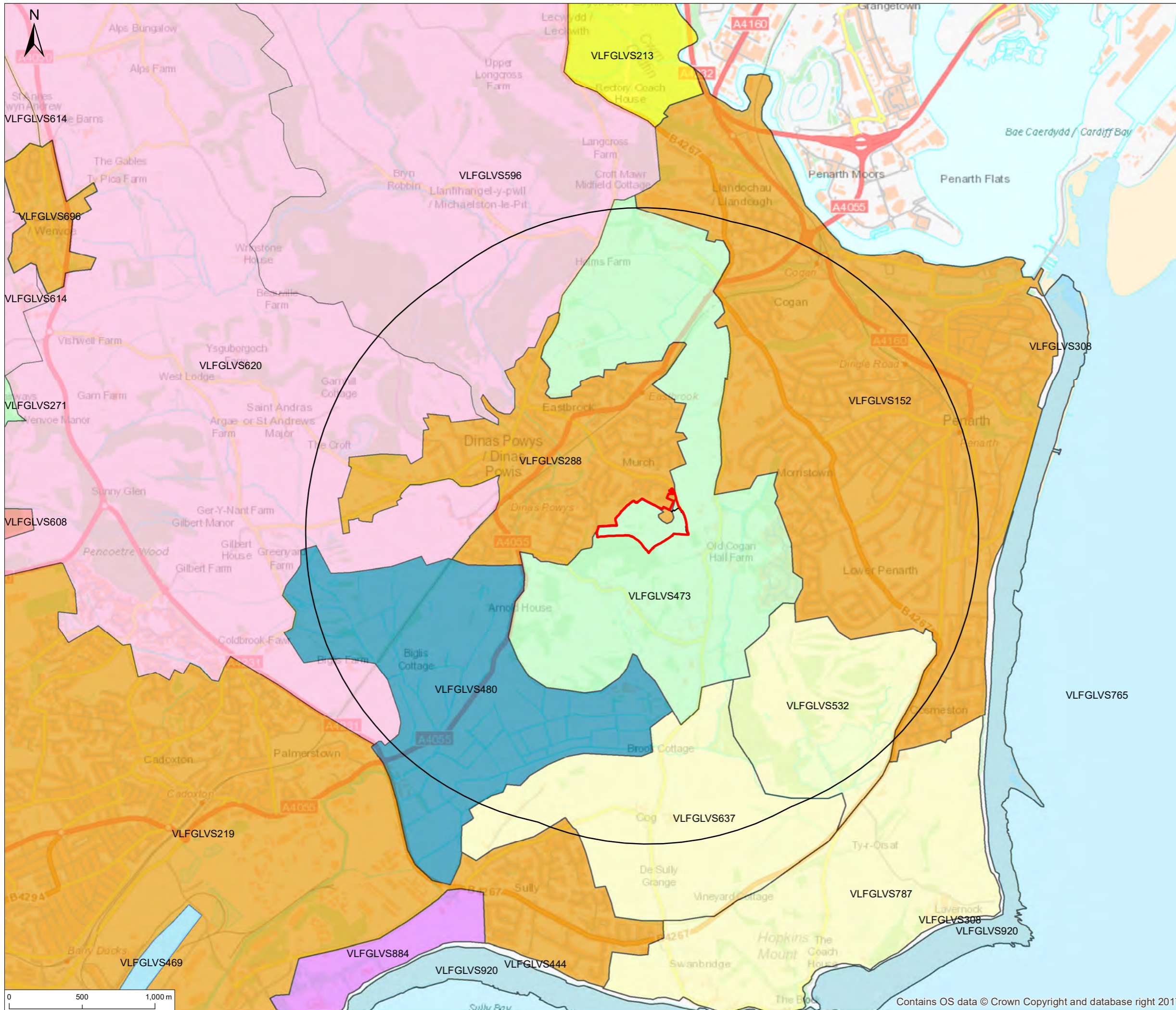
Status PLANNING	Drawn By GG	PM/Checked By MG
Job Ref JPW0642	Scale @ A3 1:25,000	Date Created AUG 17
Drawing Number JPW0642-013		Rev A

FIGURE 6b

rpsgroup.com/uk



Contains OS data © Crown Copyright and database right 2017



© 2016 RPS Group
Notes
 1. This drawing has been prepared in accordance with the scope of RPS's appointment with its client and is subject to the terms and conditions of that appointment. RPS accepts no liability for any use of this document other than by its client and only for the purposes for which it was prepared and provided.
 2. If received electronically it is the recipients responsibility to print to correct scale. Only written dimensions should be used.

Legend

- Site Boundary
- 2km Site Buffer

Visual and Sensory Aspect Area Classification

Level 3

- Flat Lowland Mosaic
- Flat Open Lowland Farmland
- Intertidal
- Lake
- Mosaic Lowland Valleys
- Mosaic Rolling Lowland
- Open Lowland Valleys
- Open Rolling Lowland
- Urban
- Wooded Lowland Valleys

Rev	Description	Date	Initial	Checked
A	Revised Red Line Boundary	08/08/17	GG	CF

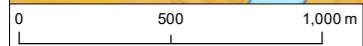
RPS

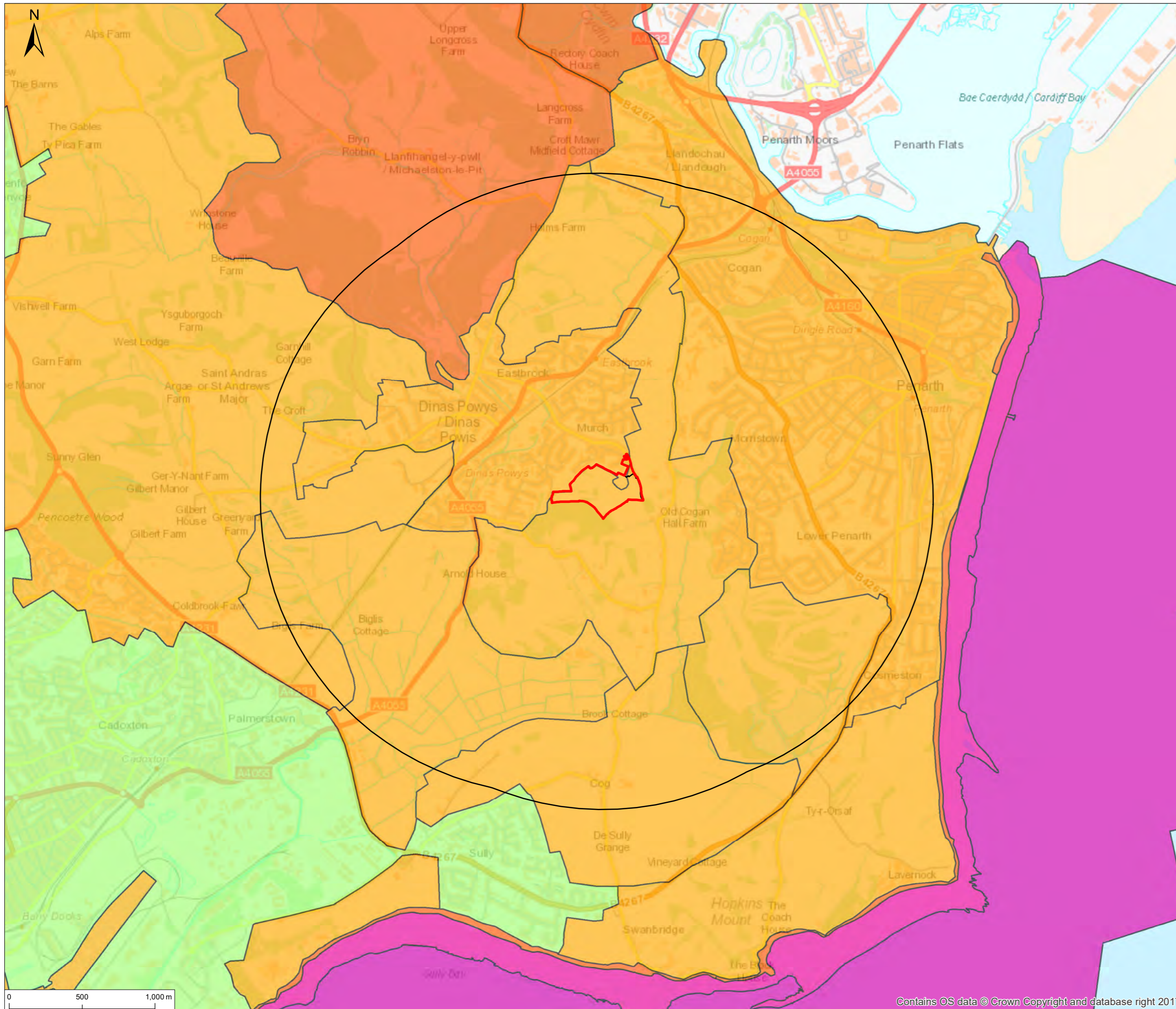
Park House, Greyfriars Road, Cardiff, CF10 3AQ
 T: +44(0)2920 668 662 E: rpsca@rpsgroup.com F: +44(0)2920 668 622

Client **BARRATT HOMES SOUTH WALES**
 Project **FORMER ST. CYRES SCHOOL**
 Title **LANDMAP: VISUAL AND SENSORY ASPECT AREA CLASSIFICATION - LEVEL 3**

Status **PLANNING** Drawn By **GG** PM/Checked By **MG**
 Job Ref **JPW0642** Scale @ A3 **1:25,000** Date Created **AUG 17**

Drawing Number **JPW0642-014** Rev **A**
FIGURE 6c
 rpsgroup.com/uk





© 2016 RPS Group
 Notes
 1. This drawing has been prepared in accordance with the scope of RPS's appointment with its client and is subject to the terms and conditions of that appointment. RPS accepts no liability for any use of this document other than by its client and only for the purposes for which it was prepared and provided.
 2. If received electronically it is the recipient's responsibility to print to correct scale. Only written dimensions should be used.

Legend


- Site Boundary
- 2km Site Buffer

Visual and Sensory Aspect Overall Classification

VS50

- Low
- Moderate
- High
- Outstanding

Rev	Description	Date	Initial	Checked
A	Revised Red Line Boundary	08/08/17	GG	CF



Park House, Greyfriars Road, Cardiff, CF10 3AQ
 T: +44(0)2920 668 662 E: rpsca@rpsgroup.com F: +44(0)2920 668 622

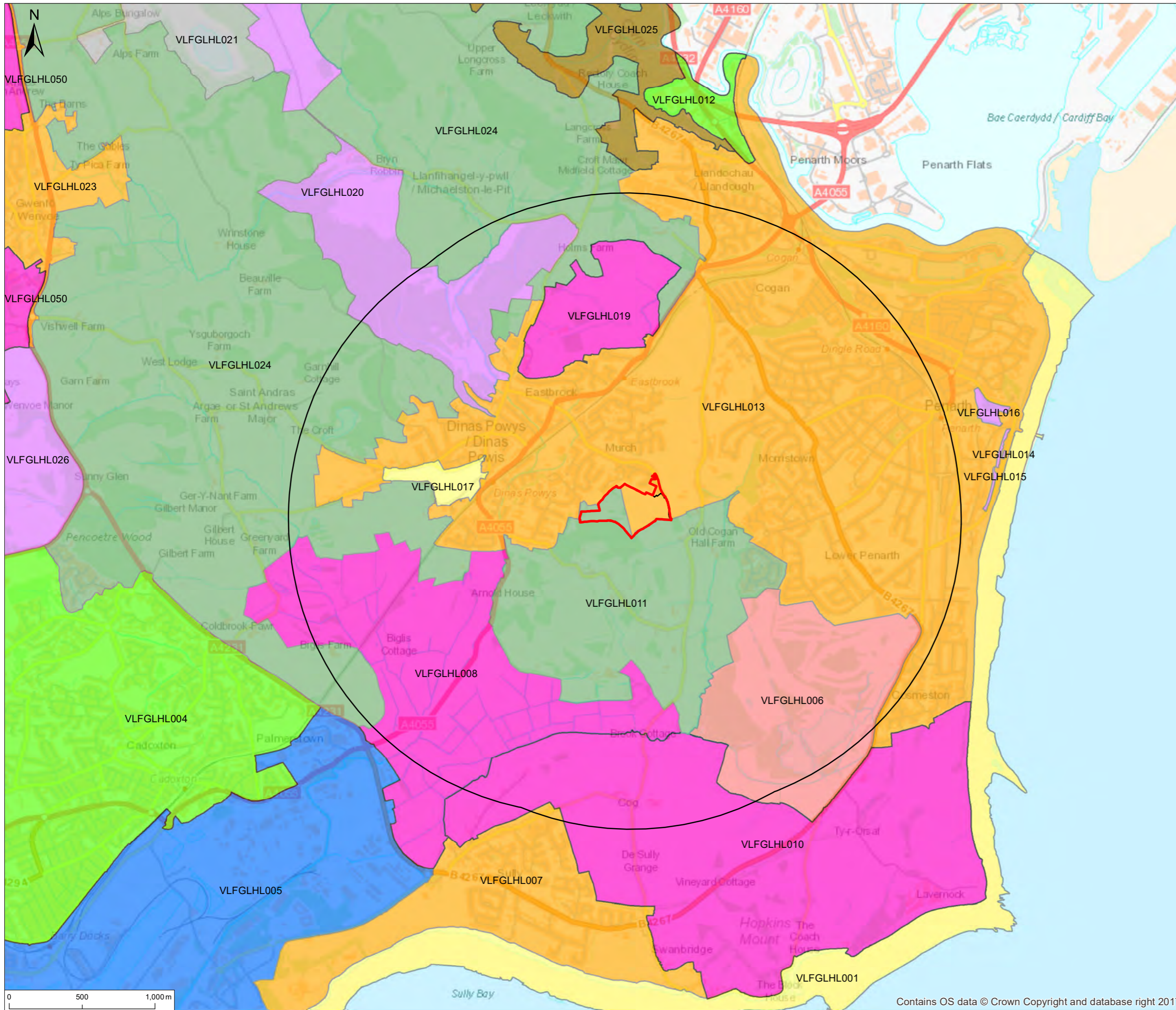
Client **BARRATT HOMES SOUTH WALES**
 Project **FORMER ST. CYRES SCHOOL**
 Title **LANDMAP: VISUAL AND SENSORY ASPECT OVERALL CLASSIFICATION**

Status PLANNING	Drawn By GG	PM/Checked By MG
Job Ref JPW0642	Scale @ A3 1:25,000	Date Created AUG 17
Drawing Number JPW0642-015		Rev A

FIGURE 6d

rpsgroup.com/uk

Contains OS data © Crown Copyright and database right 2017



© 2016 RPS Group
Notes
 1. This drawing has been prepared in accordance with the scope of RPS's appointment with its client and is subject to the terms and conditions of that appointment. RPS accepts no liability for any use of this document other than by its client and only for the purposes for which it was prepared and provided.
 2. If received electronically it is the recipient's responsibility to print to correct scale. Only written dimensions should be used.

Legend

- Site Boundary
- 2km Site Buffer

Historic Landscape Aspect Area Classification Level 3
CLS_3

- Communications
- Designed
- Extractive
- Irregular Fieldscapes
- Marginal Land
- Nucleated Settlement
- Processing/Manufacturing
- Recreational
- Regular Fieldscapes
- Woodland

Rev	Description	Date	Initial	Checked
A	Revised Red Line Boundary	08/08/17	GG	CF

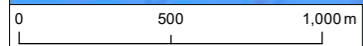
RPS

Park House, Greyfriars Road, Cardiff, CF10 3AQ
 T: +44(0)2920 668 662 E: rpsca@rpsgroup.com F: +44(0)2920 668 622

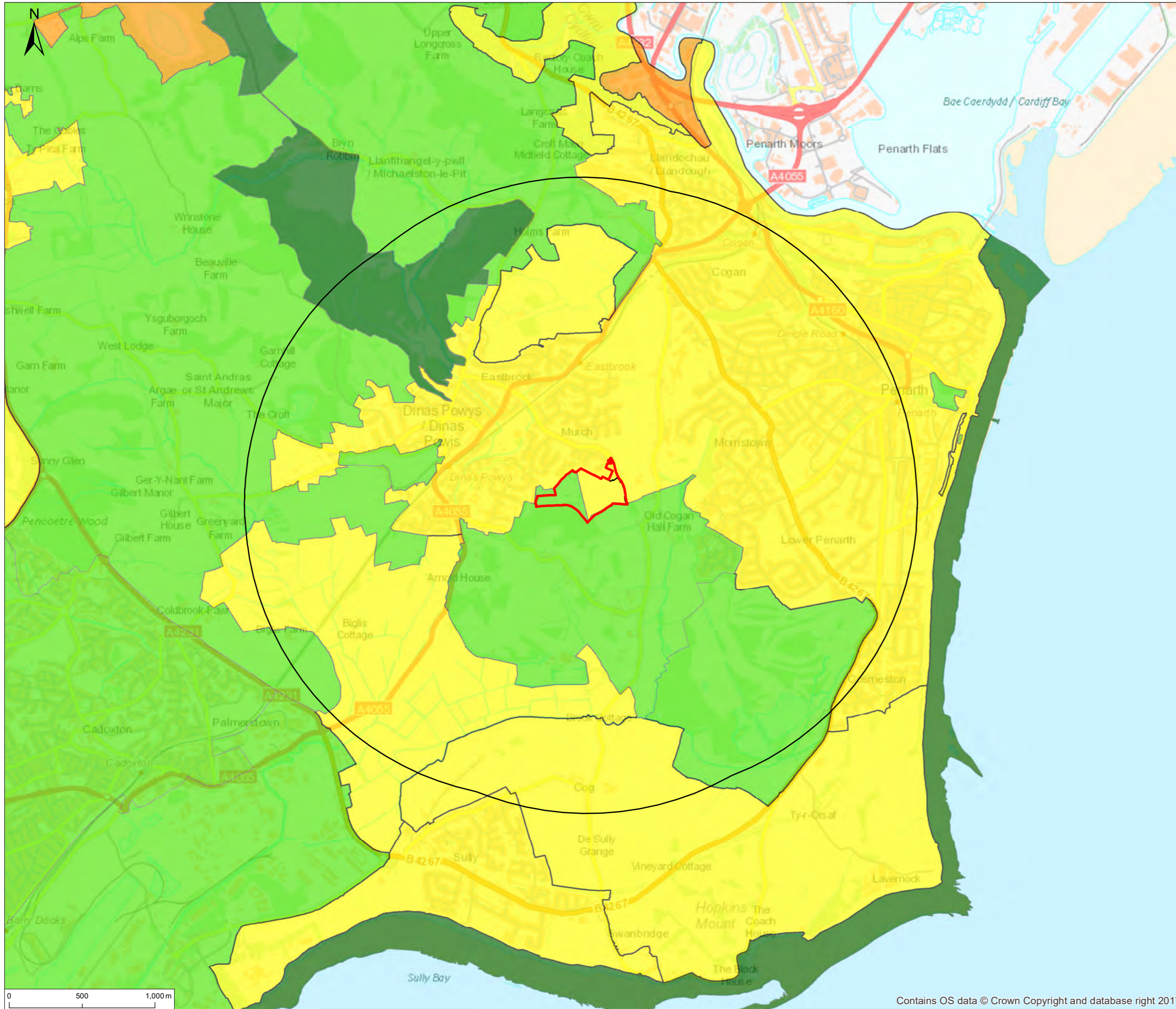
Client **BARRATT HOMES SOUTH WALES**
 Project **FORMER ST. CYRES SCHOOL**
 Title **LANDMAP: HISTORIC LANDSCAPE ASPECT AREA CLASSIFICATION LEVEL 3**

Status **PLANNING** Drawn By **GG** PM/Checked By **MG**
 Job Ref **JPW0642** Scale @ A3 **1:25,000** Date Created **AUG 17**
 Drawing Number **JPW0642-016** Rev **A**
FIGURE 6e

rpsgroup.com/uk



Contains OS data © Crown Copyright and database right 2017



© 2016 RPS Group
 Notes
 1. This drawing has been prepared in accordance with the scope of RPS's appointment with its client and is subject to the terms and conditions of that appointment. RPS accepts no liability for any use of this document other than by its client and only for the purposes for which it was prepared and provided.
 2. If received electronically it is the recipient's responsibility to print to correct scale. Only written dimensions should be used.


Legend

- Site Boundary
- 2km Site Buffer

Historic Landscape Aspect Overall Value

- Outstanding
- High
- Moderate
- Low
- Unassessed

Rev	Description	Date	Initial	Checked
A	Revised Red Line Boundary	08/08/17	GG	CF



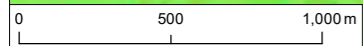
Park House, Greyfriars Road, Cardiff, CF10 3AQ
 T: +44(0)2920 668 662 E: rpsca@rpsgroup.com F: +44(0)2920 668 622

Client **BARRATT HOMES SOUTH WALES**
 Project **FORMER ST. CYRES SCHOOL**
 Title **LANDMAP: HISTORIC LANDSCAPE ASPECT OVERALL VALUE**

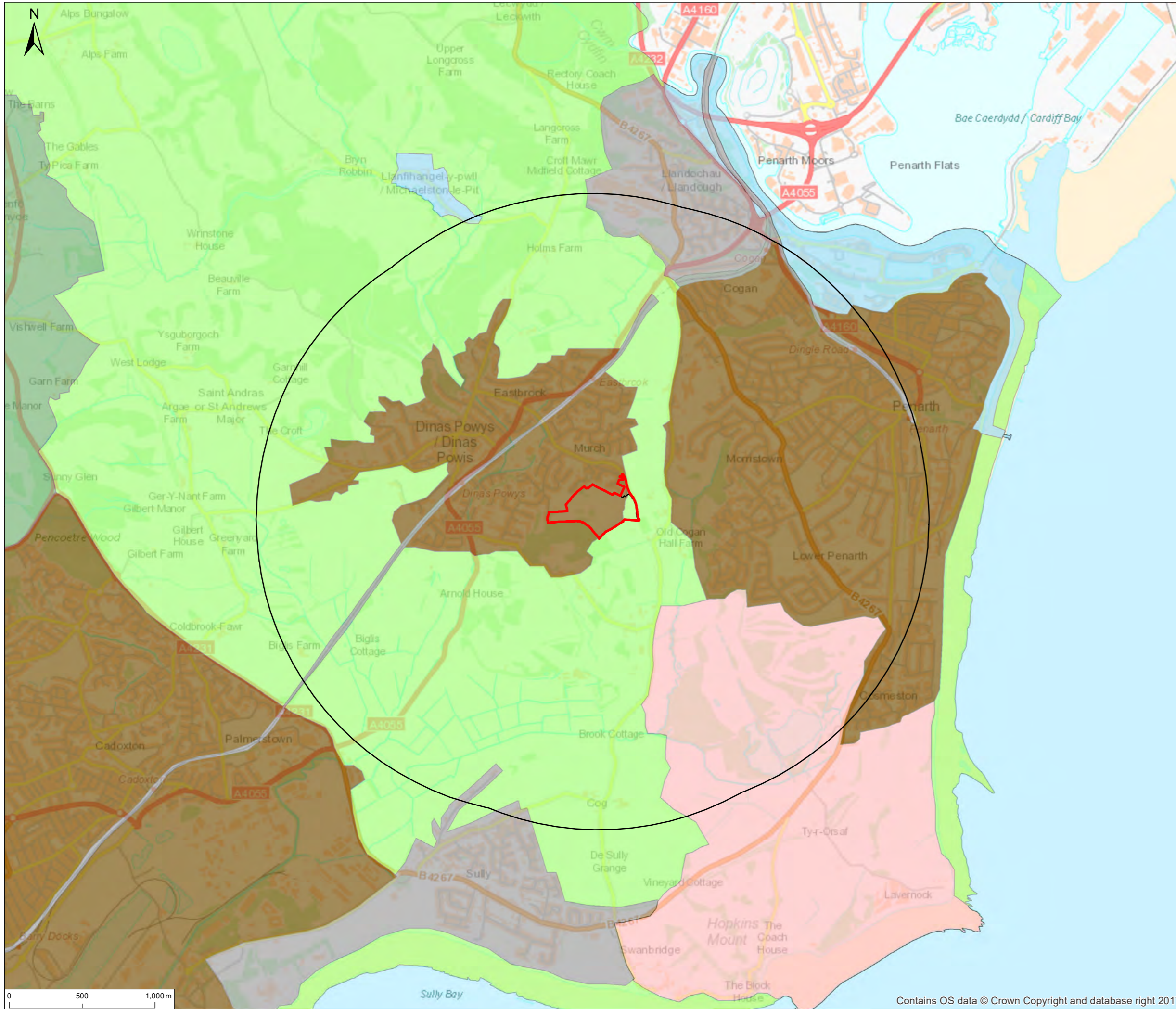
Status PLANNING	Drawn By GG	PM/Checked By MG
Job Ref JPW0642	Scale @ A3 1:25,000	Date Created AUG 17
Drawing Number JPW0642-017		Rev A

FIGURE 6f

rpsgroup.com/uk



Contains OS data © Crown Copyright and database right 2017



© 2016 RPS Group
 Notes
 1. This drawing has been prepared in accordance with the scope of RPS's appointment with its client and is subject to the terms and conditions of that appointment. RPS accepts no liability for any use of this document other than by its client and only for the purposes for which it was prepared and provided.
 2. If received electronically it is the recipient's responsibility to print to correct scale. Only written dimensions should be used.

Legend

- Site Boundary
- 2km Site Buffer

LANDMAP Cultural Landscape Aspect

Level 3

- Customs
- Infrastructure
- Institutions
- Places
- Rural
- Urban

Rev	Description	Date	Initial	Checked
A	Revised Red Line Boundary	08/08/17	GG	CF

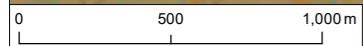
RPS

Park House, Greyfriars Road, Cardiff, CF10 3AQ
 T: +44(0)2920 668 662 E: rpsca@rpsgroup.com F: +44(0)2920 668 622

Client **BARRATT HOMES SOUTH WALES**
 Project **FORMER ST. CYRES SCHOOL**
 Title **LANDMAP: CULTURAL LANDSCAPE ASPECT AREA CLASSIFICATION LEVEL 3**

Status PLANNING	Drawn By GG	PM/Checked By MG
Job Ref JPW0642	Scale @ A3 1:25,000	Date Created AUG 17
Drawing Number JPW0642-018		Rev A

FIGURE 6g



Contains OS data © Crown Copyright and database right 2017

rpsgroup.com/uk